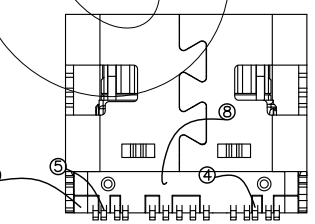
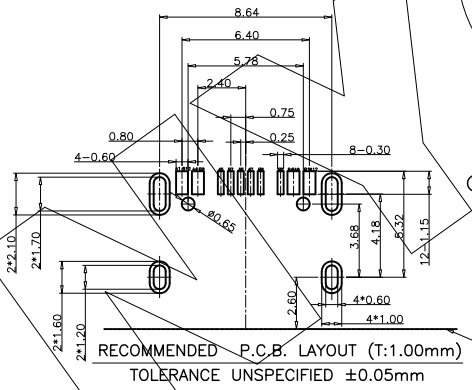
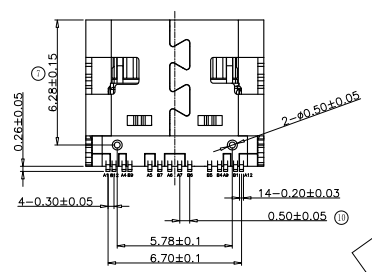
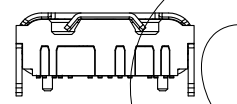
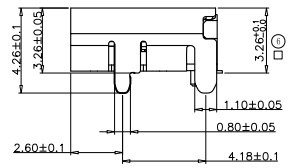
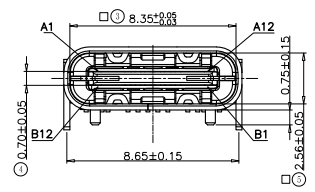
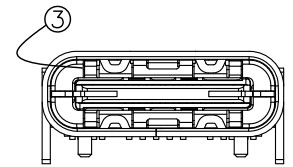
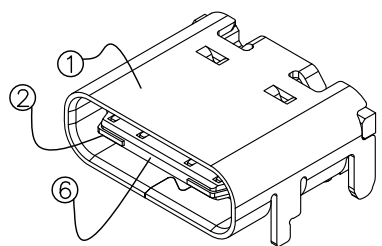
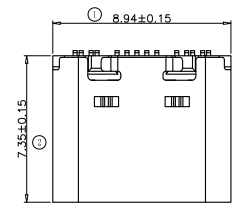


零件图	成品图	客户图
		○

REVISION DATA				
REV	ECN No.	DESCRIPTION	NAME	DATE
A0		NEW DRAWING	JIN	2020-10-08



RECOMMENDED P.C.B. LAYOUT (T:1.00mm)  
TOLERANCE UNSPECIFIED ±0.05mm  
CONNECTOR FRONT EDGE

	A		B
1	GND	12	GND
2		11	
3		10	
4	VBUS	9	PWR
5	CC	8	SBU2
6	D-	7	D+
7	D+	6	D-
8	SBU1	5	Vconn
9	VBUS	4	PWR
10		3	
11		2	
12	GND	1	GND

QTY'S	MATERIAL	NAME	NO.
1	THERMOPLASTIC UL94V-0	DIP HOUSING	⑧
1	THERMOPLASTIC UL94V-0	SMT HOUSING	⑦
1	THERMOPLASTIC UL94V-0	LATCH HOUSING	⑥
12	COPPER ALLOY	DIP CONNECTOR	⑤
12	COPPER ALLOY	SMT CONNECTOR	④
2	SUS	EMI	③
1	SUS	LATCH	②
1	SUS	SHELL	①

**ANYCONN**® 东莞市恩康电子科技有限公司  
 www.anyconn.com  
 TEL:+86(0)769 8904 9672  
 FAX:+86(0)769 8904 9671  
 E-MAIL:sales@anycom.tw

**DONGGUAN ENKANG ELECTRONICS TECHNOLOGY CO.,LTD**

TOLERANCE	DATE :	2020-10-08	TITLE:	TYPE C母座单排14P
ANGLE ±5°	DRAWN :	JIN		
X.XXX ±0.15	CHECKED :			
X.XX ±0.25	APPROVED :		PART NO: USB224	
X.X ±0.40	PROJECTON		REV: A0	UNIT: mm
X. ±0.50			SCALE: 1:1	SIZE: A4
			PAGE: 1/1	